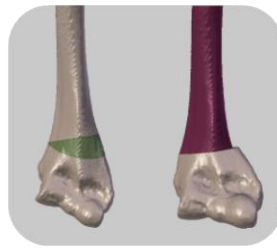


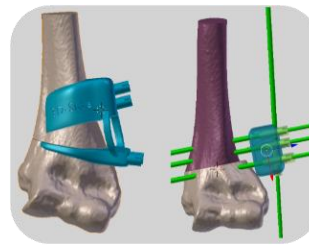
**CHALLENGE** Restoring perfect alignment of the arm bones, by corrective osteotomy of specific angles, in different planes.

## PLANNING

The corrective osteotomy of the humerus was planned with our 3D design software.



Resection planning



Design of surgical guide and fixator

## PRODUCTION

By means of high-tech 3D-Printing the anatomical model of the patient, the surgical guide and the fixator were produced.



The surgical guide allowed to resect the exact piece of bone needed to restore perfect realignment of the arm. The fixator ensured the correct final position of the bone parts



Fixator : determines the final position



Surgical guide : guides the blade

